



EVOLUTION SERIES ACCESSORIES

ANTI-ICE CONTROL

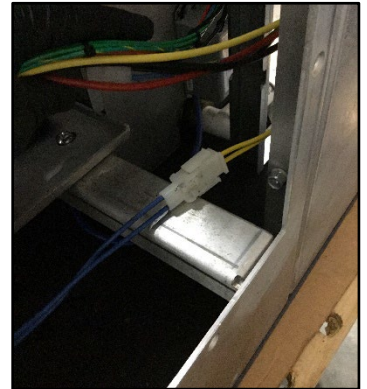
INSTALLATION INSTRUCTIONS

Complete Anti-Ice Control package includes:

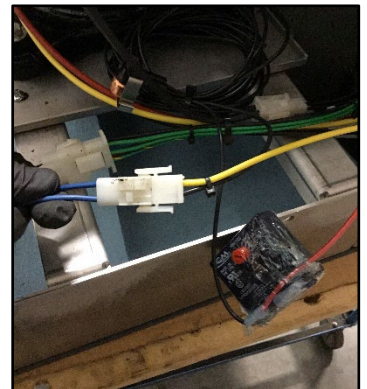
- **Anti-Ice Freeze Stat**
- **Foam Tape**
- **Instructions**

1. Turn off breaker power to the **Indoor Air Handler** and remove the left side of the **Rear Access Panel**.

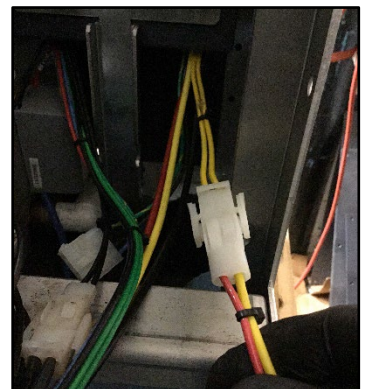
2. Locate the two **High-Pressure Sensor Wires** and follow them to the plug that connects them to the **Electrical Panel**.



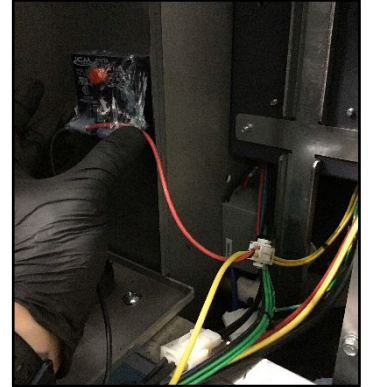
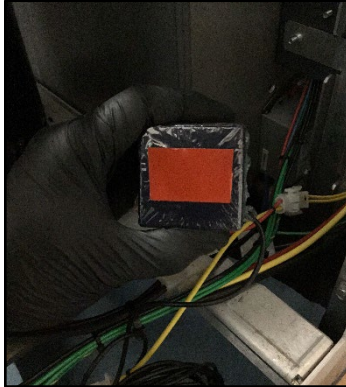
3. Disconnect the two **High-Pressure Sensor Wires** from the corresponding **Yellow Wires** by squeezing the release tabs, then plug the **Male** side of the **Anti-Ice Freeze Stat (Yellow & Black Wires)** into the **Female** plug off the **High-Pressure Sensor**.



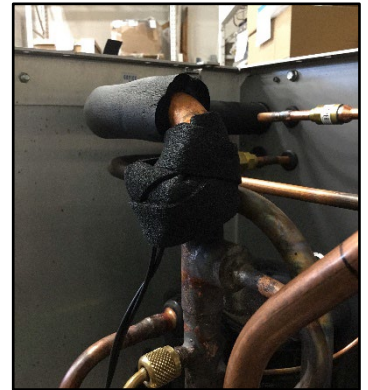
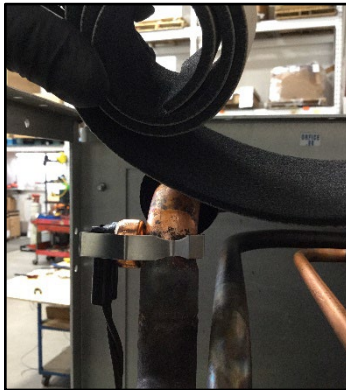
4. Plug the **Female** side of the **Anti-Ice Freeze Stat (Yellow & Red Wires)** into the **Male** plug off the **Electrical Panel (the two Yellow Wires)**. With these **Wires** now connected to form a complete loop, the **Anti-Ice Freeze Stat** has been wired in correctly.



5. Firmly secure the **ICM Delay** to the unit with the double-sided **Foam Tape** provided.



6. Wrap the 24" section of **Foam Tape** around the **Anti-Ice Freeze Stat** to secure it to a bare section of the 7/8" **Suction Pipe**. The **Anti-Ice Freeze Stat** is now completely and efficiently installed.



If the Evolution Series system ever reaches a point where it begins to freeze, the Anti-Ice Freeze Stat will immediately, automatically shut off Cooling Mode for a set duration of exactly 8 minutes. Normal system operation will promptly resume again after this brief time delay.

For more information, please visit:
www.excelairsystems.com/evolution-series-index